

SANTS INTERNATIONAL TRADING CO.,LTD

603E,6/F, HANG PONT COMMERCIAL BUILDING, 31 TONKIN ST., CHEUNG SHA WAN, KOWLOON, HONG KONG

TEL / FAX : +86-13416407902 - EMAIL : INFO@SANTSGROUP.COM

www.santsgroup.com

Solar Glass P.N. SIJ007X

Solar Glass Specifications

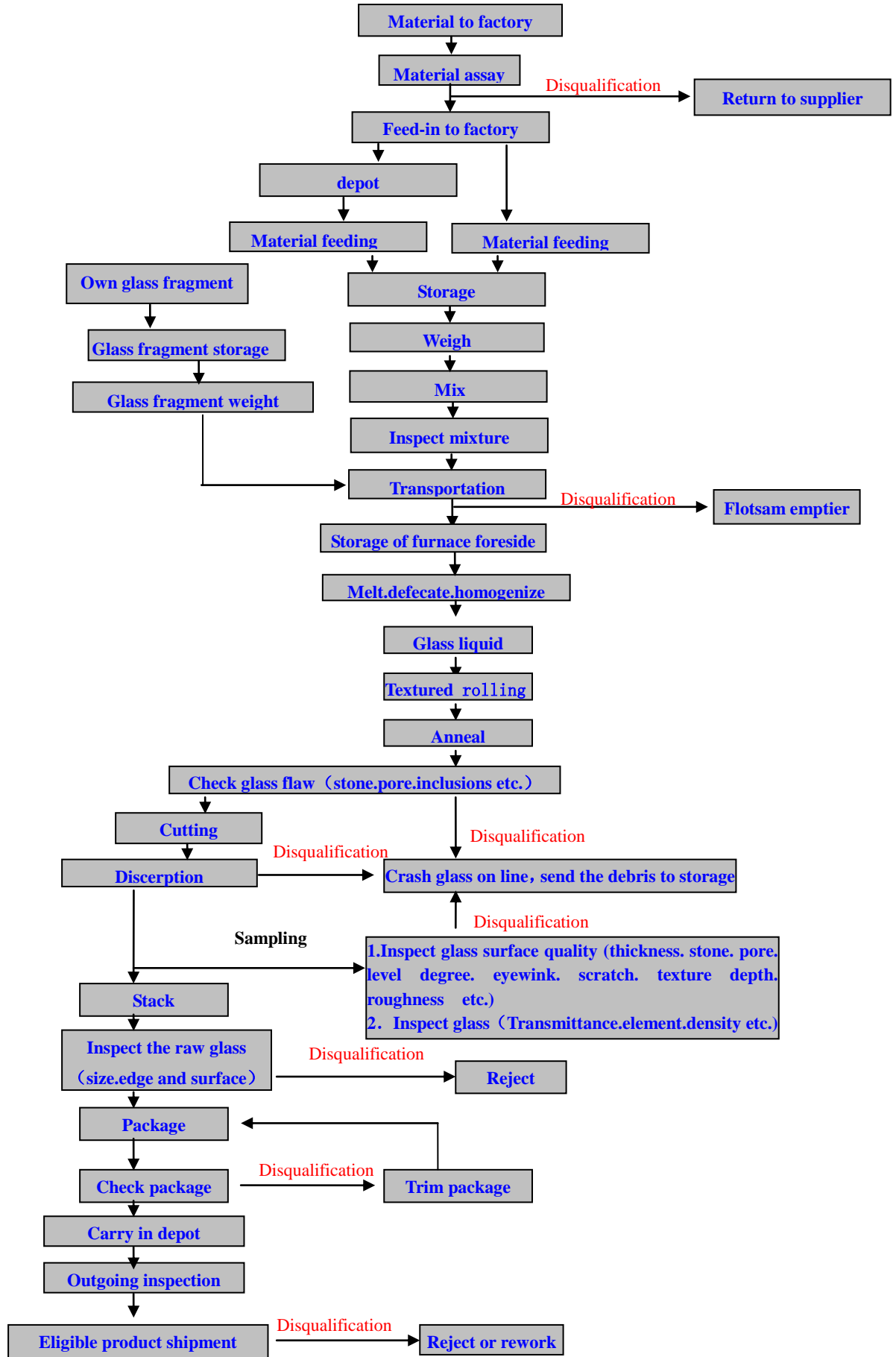
low iron solar glass,designed and developed independently is the new generation glass for solar modules. WE reserve the product's intellectual property rights. The advantages of glass are excellent solar light transmittance, low absorption rate, low reflectance low iron content, superior physical strength, and significant flatness, which is the ideal encapsulation material for solar photovoltaic modules.

Properties:

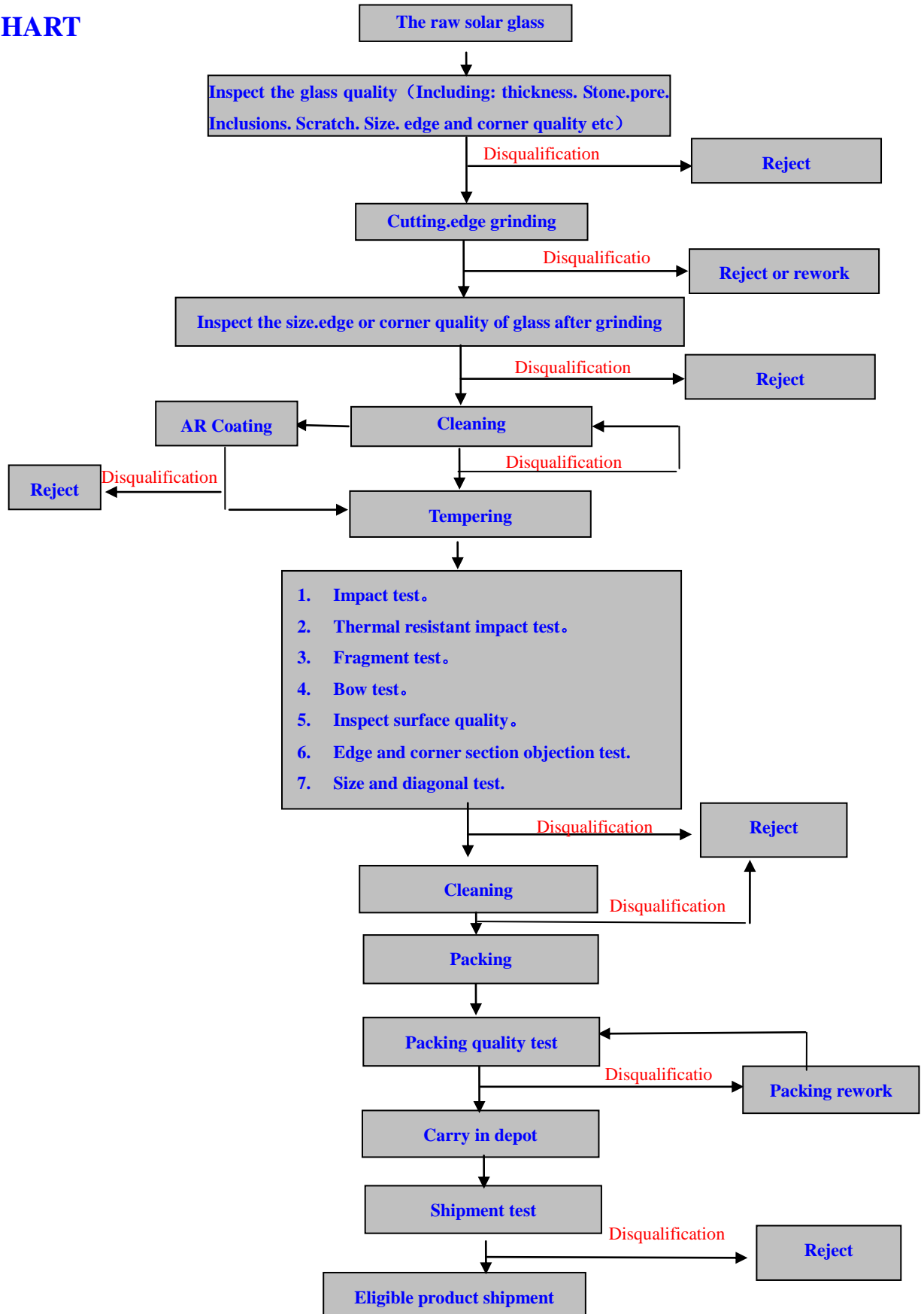
1. Thickness Tolerance: $3.2 \pm 0.2\text{mm}, 4.0 \pm 0.3\text{mm}$;
2. Solar Transmittance of raw glass: $\geq 91.6\%$;
3. Poisson Ratio: 0.2;
4. Density: 2.5g/cc;
5. Young's Modulus: 73GPa;
6. Tensile Strength: 42MPa;
7. Hemispherical Emissivity: 0.84;
8. Expansion Coefficient: $9.03 \times 10^{-6}/^{\circ}\text{C}$;
9. Softening Point: 720°C ;
10. Annealing Point: 550°C ;
11. Strain Point: 500°C ;
12. Coating Process: Rolling.

Production process:

THE RAW SOLAR GLASS PROCESS FLOW CHART



THE TEMPERED SOLAR GLASS PROCESS FLOW CHART



Transmittance: $\geq 94.1\%$;

| Weathering test of coating glass | | | |
|----------------------------------|---|-----------------------|---------------------------|
| Analysis item | Criterion | | Result |
| | Test conditions | Transmittance change | |
| Salt spray test | 96h | $\Delta T \leq 0.8\%$ | $\Delta T = -0.32\%$ pass |
| Outdoor exposure test | total radiation: 60kwh/m ² . time: 600h | $\Delta T \leq 0.8\%$ | $\Delta T = -0.35\%$ pass |
| Pencil hardness test | | $\geq H$ | 3H pass |
| Abrasion resistance test | 500 crock meter cycles | $\Delta T \leq 0.8\%$ | $\Delta T = -0.05\%$ pass |
| Damp heat steady state test | temperature: +85°C, humidity :85%RH,time:1000h | $\Delta T \leq 0.8\%$ | $\Delta T = -0.23\%$ pass |
| UV exposure test | UV radiation:15kwh/m ² . time: 720h | $\Delta T \leq 0.8\%$ | $\Delta T = -0.02\%$ pass |
| Thermal cycling test | temperature: -40°C/+85°C, 200 cycles | $\Delta T \leq 0.8\%$ | $\Delta T = -0.26\%$ pass |
| Test methods | 1. Salt spray test is according to Standard IEC61701; 2. Outdoor exposure test is according to Standard IEC61215; 3. Pencil hardness test is according to Standard GB/T6739; 4. Abrasion resistance test is according to Standard EN1096; 5. Damp heat steady state test is according to Standard IEC61215; 6. UV exposure test is according to Standard IEC61215; 7. Thermal cycling test is according to Standard IEC61215. | | |
| Checker | | Auditing | |
| Declaration | 1.The results relate only to the items tested 2.The report shall not be copied without the approval of the laboratory. | | |

Notice:

1. The glass box should be stored in a dry, ventilated environment, and water is not allowed on the ground.
2. Once opened, the glass box should be immediately use. If there are some piece of glass is left indeed after the order is finished, the separated paper should be take off, and the glass is placed on the L rack and covered by plastic film to prevent the mildew occur. At the same time the glass should be washed before use and checked whether there exist abnormal on the surface of the glass.
3. For the reason of glass is fragile, when handing and transporting the glass, it should take protective measures to avoid collision of the edge and corner caused by the crushing. At the same time, skin should not be exposed in the course of handing glass.
4. The glass should be transported and moved gently to avoid dragging the glass or other hard objects on the glass which cause scratch on the surface.